



Eastwood, £109,995 1 Bedroom Upper Floor Flat Flat

One Bed First Floor Retirement Home with Ground Floor access to Rear in this popular Residential Block . Good Communal Facilities including Laundry Room with Washing Machines & dryers. Communal Lounge and Kitchen. Well Tended Gardens. Lifts To All Floors, Parking. **No Chain.** Council Tax: C EPC Rating: C



Elizabeth House, Rayleigh Road, Essex, SS9 5PZ

Star Features:

ONE BED FIRST FLOOR FLAT

GROUND FLOOR ACCESS AT REAR / ALSO SERVICED BY A NEW LIFT TO THE FRONT OF THE BLOCK

GARDEN VIEWS

RETIRED COMPLEX FOR BUYERS OF STATE PENSIONABLE AGE

VERY WELL MAINTAINED

LOUNGE / DINING ROOM 14FT X 11FT 8 OPEN TO FITTED KITCHEN 10FT 9 X 7FT

WARDEN CONTROLLED PLUS "CARELINE" SERVICES OUT OF HOURS

GOOD COMMUNAL FACILITIES INCLUDE RESIDENTS LOUNGE AND KITCHEN

LAUNDRY ROOM WITH WASHERS AND DRYERS INCLUDED IN THE SERVICE CHARGE

COMMUNAL GROUNDS AND PARKING / NO CHAIN

Energy Performance Rating: C

Council Tax Band: C

Inspected By: Thomas Devlin-James

Disclaimer: The measurements indicated are supplied for guidance only, potential buyers are advised to re-check the measurements before committing to any expense.

Rooms:

Entrance Hall

Lounge 14' x 11'8

Opens To Kitchen 10'9 x 7'

Bedroom 12'10 x 8'

Shower Room

Communal Facilities:

Residents Lounge with Attached Kitchen Reception Seating Area Laundry Room Mobility Storage Area Communal Gardens Visitor and Residents Parking Areas Gardens Surround the Building

Lease Information:

Length of Lease: **65 Years**

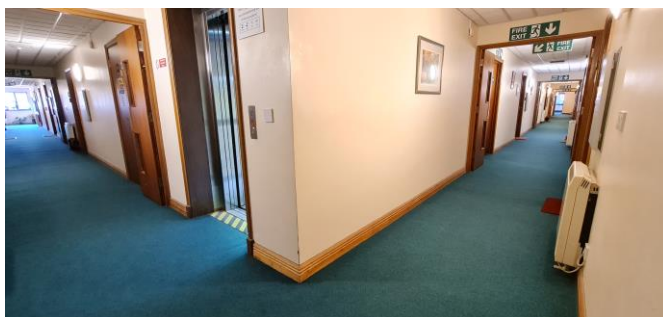
Ground Rent: **£50.00 pa**

Service Charge: **£201 pcm**

Buildings Insurance: **£300 - £350**, To Be Advised.



Members of the Guild of Property Professionals



Members of the Guild of Property Professionals