



Rayleigh, Guide Price £825,000 - £850,000, Five Bed Detached House

Essex Guild Homes are Delighted to Offer For Sale this Very Imposing Five Bed / Four Reception Family Home Full of Character, Many Original Features and Fireplaces ! On a Double Plot with Lots of Space Throughout and Potential to Extend Further (Stpp). Short Walk to Rayleigh Train Station.

Council Tax Band: F EPC Rating: D



Rayleigh, Essex, SS6 9LP

STUNNING AND IMPOSING FIVE BED / FOUR RECEPTION FAMILY HOME

LARGE WIDE PLOT APPROX 57FT WIDE X 135FT DEEP

BEAUTIFUL HOME FULL OF CHARM, CHARACTER AND MANY ORIGINAL FEATURES

LARGE WELCOMING ENTRANCE HALL

LOUNGE / DINING ROOM 23FT 6 X 17FT MAX AND FITTED KITCHEN / BREAKFAST ROOM 17FT 8 X 13FT 10

14FT OFFICE / PLAYROOM AND 12FT CRAFT ROOM

FAMILY BATHROOM / EN-SUITE TO MASTER PLUS GROUND FLOOR CLOAK/WC

STUNNING GARDEN WITH BEAUTIFUL NEW PATIO AND SMALL SUMMER HOUSE TO REAR

HUGE POTENTIAL TO EXTEND FURTHER

MUST BE VIEWED

Energy Performance Rating: D

Council Tax Band: F

Inspected By: Thomas Devlin-James

Disclaimer: The measurements indicated are supplied for guidance only, potential buyers are advised to re-check the measurements before committing to any expense.

Rooms:

Entrance Hall

14' 2" x 8' 0" (4.31m x 2.44m)

Lounge / Dining Room

23' 6" max x 17' 0" max (7.16m x 5.18m)

Separate Reception to Front

14' 5" x 10' 10" (4.39m x 3.30m)

Kitchen / Breakfast Room

17' 8" x 13' 10" (5.38m x 4.21m)

Office / Playroom

14' 2" x 6' 5" (4.31m x 1.95m)

Studio / Craft Room

12' 0" x 7' 10" (3.65m x 2.39m)

Ground Floor Cloak / WC

5' 4" x 4' 3" (1.62m x 1.29m)



First Floor Landing

11' 0" x 8' 1" (3.35m x 2.46m)

Master Bedroom with En Suite to Front and Side

17' 10" x 10' 10" (5.43m x 3.30m)

En Suite

7' 8" x 5' 6" (2.34m x 1.68m)

Bedroom Two to Rear

13' 5" x 17' 1" narrows to 10' 7" (4.09m x 5.20m nt 3.22m)

Bedroom Three to Front

12' 0" x 10' 10" (3.65m x 3.30m)

Bedroom Four to Side

11' 4" x 11' 3" (3.45m x 3.43m)

Bedroom Five to Front

8' 10" x 8' 0" (2.69m x 2.44m)

Family Bathroom

8' 0" x 5' 8" (2.44m x 1.73m)

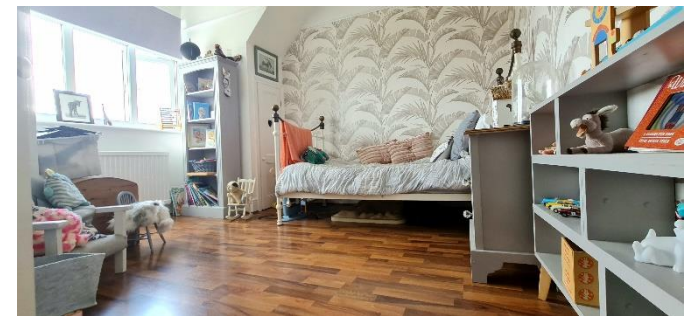
Rear Garden with Summer House and Outbuilding

One-and-a-Half Width Garage











Ground Floor

Approx. 95.0 sq. metres (1023.1 sq. feet)



First Floor

Approx. 78.4 sq. metres (843.7 sq. feet)



Total area: approx. 173.4 sq. metres (1866.8 sq. feet)