

ESSEX GUILD HOMES: | 75 EASTWOOD ROAD, RAYLEIGH, ESSEX, SS6 7JN | TEL NO: 01268 777728 | www.essexguildhomes.co.uk



Basildon, Guide Price £450,000 - £465,000, 6 Bedroom Terraced House

TEN ROOM HOUSE ! PLUS Two Bathrooms, Ground Floor Cloak, Fitted Kitchen and Utility.. Very Large Family Home in the * Lee Chapel Primary School Catchment & Walking Distance of the Hospital *. Versatile Property. Included Annexe to Side, Converted Loft Room. Suit HMO or Letting. NO CHAIN

Council Tax Band: C

EPC Rating: TBA



Great Gregorie, Essex, SS16 5QX

TEN ROOM HOUSE * PLUS * FITTED KITCHEN, UTILITY AND BATHROOMS

GUIDE PRICE £450,000 - £465,000

TWO FULL BATHROOMS / GROUND FLOOR SHOWER ROOM AND
ADDITIONAL WC

VERY LARGE FAMILY HOME OVER THREE LEVELS

POSSIBLE ANNEXE TO SIDE (SEE FLOOR PLANS)

18FT LOUNGE OPENS TO DINING ROOM THEN ONTO CONSERVATORY

REAR GARDEN APPROX 120FT WITH SUMMERHOUSE / LODGE

MULTIPLE PARKING TO FRONT

IDEAL BUY TO LET OR HMO

NO CHAIN

Energy Performance Rating:

Council Tax Band: C

Inspected By: Thomas Devlin-James

Disclaimer: The measurements indicated are supplied for guidance only, potential buyers are advised to re-check the measurements before committing to any expense.

Rooms:

Entrance Hall

Through Lounge / Dining Room

Lounge Area open to Dining Room

18' 7" x 12' 0" (5.67m x 3.66m)

Dining Room open to Lounge and Doors to Conservatory

10' 6" x 9' 3" (3.19m x 2.82m)

Conservatory with Doors to Rear Garden

9' 7" x 9' 6" (2.91m x 2.90m)

Fitted Kitchen with Double Glazed Window to Rear

10' 10" x 7' 10" (3.29m x 2.40m)

Ground Floor WC

6' 5" x 2' 7" (1.96m x 0.78m)

Ground Floor Annex....

Self Contained, Ground Floor One Bed / One Recep with Kitchen & Shower Room

Annex Living Room

10' 2" x 9' 9" (3.10m x 2.97m)

Annex Kitchen / Utility Room

9' 11" x 4' 8" (3.02m x 1.43m)

Annex Bedroom to Rear

9' 1" x 8' 6" (2.77m x 2.58m)

Annex En Suite Shower Room to Bedroom

Window to Garden, Three Piece Suite

First Floor....

First Floor Landing

Bedroom with Double Glazed Window to Front

12' 10" x 12' 1" (3.91m x 3.69m)

Bedroom with Double Glazed Window to Rear

12' 3" x 12' 0" (3.73m x 3.65m)

Bedroom with Double Glazed Window to Front

9' 9" x 8' 0" (2.98m x 2.43m)

Bedroom with Double Glazed Window to Front

11' 1" x 7' 1" (3.39m x 2.15m)

Bathroom One with Three Piece Suite and Window to Rear

9' 8" x 5' 10" (2.94m x 1.78m)

Bathroom Two with Three Piece Suite & Double Glazed Window

8' x 5' 6" (2.45m x 1.68m)



WE VALUE PEOPLE



NOT JUST PROPERTY



Second Floor....

Second Floor Landing

Bedroom Five / Play Room

16' 0" x 13' 8" (4.87m x 4.16m)

With Three Large Eaves Storage Areas and Velux Style Windows.

Rear Garden with Patio then mostly Laid to Lawn

Summer House / Lodge

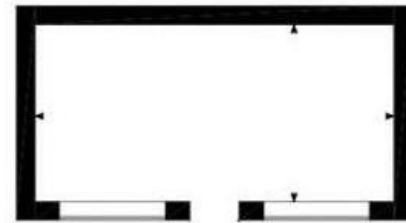
19' 2" x 9' 5" (5.85m x 2.88m)

Located to Rear of Garden

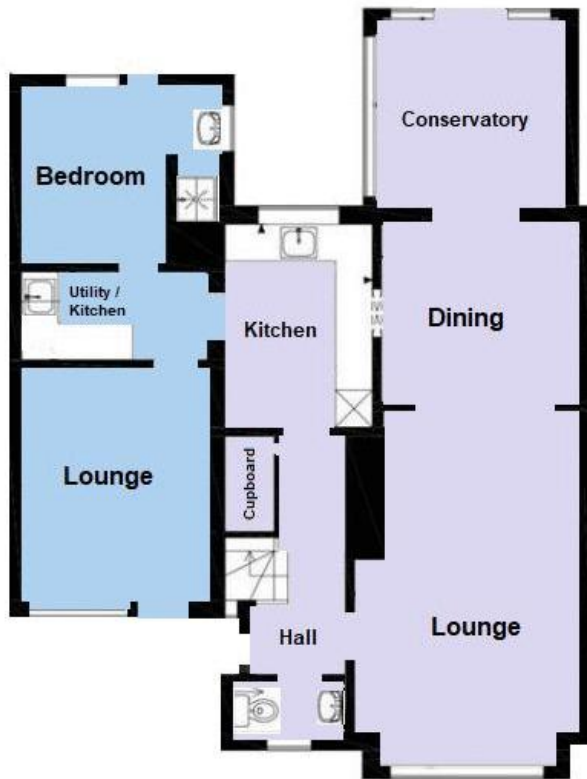




**Total Floor Space:
2045 sq ft**



**Summerhouse /
Lodge**

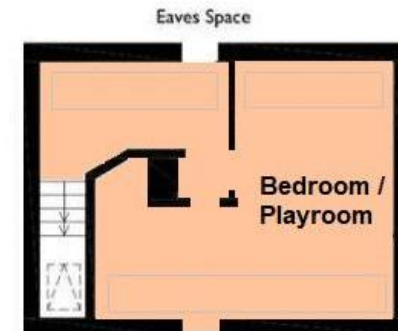


Annex

Ground Floor



First Floor



Top Floor

Please Note:
Location of doors, windows, walls and other items are for illustrative purposes only.
Buyers are advised to take their own measurements before committing to any expense